

Industrial Tank Heaters

WL Series
Weathertight
Three Phase

1500-5000 Watts



WL Model without thermostat



WL Model with thermostat

Engine Displacement	Model Number without Thermostat	Model Number with Thermostat see chart 1	Volts	Watts	Phase	Amps
600 - 800cid 9.8 - 13.1L	WL325800-000	WL3258XX-200	208	2500	3	6.9
	WL325200-000	WL3252XX-200	240	2500	3	6.0
	WL325300-000	WL3253XX-200	380	2500	3	3.8
	WL325400-000	WL3254XX-200	480	2500	3	3.0
	WL325500-000	WL3255XX-200	575	2500	3	2.5
1000 - 1350cid 16.4 - 22.1L	WL340800-000	WL3408XX-200	208	4000	3	11.1
	WL340200-000	WL3402XX-200	240	4000	3	9.6
	WL340300-000	WL3403XX-200	380	4000	3	6.1
	WL340400-000	WL3404XX-200	480	4000	3	4.8
	WL340500-000	WL3405XX-200	575	4000	3	4.0
1350 - 1650cid 22.1 - 27.0L	WL350800-000	WL3508XX-200	208	5000	3	13.9
	WL350200-000	WL3502XX-200	240	5000	3	12.0
	WL350300-000	WL3503XX-200	380	5000	3	7.6
	WL350400-000	WL3504XX-200	480	5000	3	6.0
	WL350500-000	WL3505XX-200	575	5000	3	5.0

ADAPTER FITTINGS

For the use of .75" or 1" ID heater hose, hose barb adapters are available. See below.

Part Number	Description
HB-1	1" NPT to 1" hose barb adapter. Installs in 1" NPT female inlet or outlet of the heater.
HB-3/4	1" NPT to .75" hose barb adapter. Installs in 1" NPT female inlet or outlet of the heater.

CHART 1 - HEATERS WITH THERMOSTATS

To specify temperature range of thermostat, insert numerical code from chart in place of the **XX** in model number.

Example:

Desired Temperature Range 100° - 120°F
Model Number: WL3252**XX**-200
Order as: WL3252**10**-200

	Temperature Range		Numerical Code
	ON	OFF	
All 3 phase heaters with thermostat must use a control box See Control Systems page 38 of product catalog	80°F (27C)	100°F (38C)	08
	100°F (38C)	120°F (49C)	10
	120°F (49C)	140°F (60C)	12
	Adjustable 90° - 130°F (32° - 54°C)		A3

Replacement Parts

Model Number without Thermostat	Model Number with Thermostat see chart 2	Replacement Parts				
		Element	Tank	Element O-ring	Mounting Kit	Check Valve
WL325800-000 WL325200-000 WL325300-000 WL325400-000 WL325500-000	WL3258XX-200 WL3252XX-200 WL3253XX-200 WL3254XX-200 WL3255XX-200	E02583W-30NT-00 E02523W-30NT-00 E02533W-30NT-00 E02543W-30NT-00 E02553W-30NT-00	RTL RTL RTL RTL RTL	TML-OR TML-OR TML-OR TML-OR TML-OR	FK6 FK6 FK6 FK6 FK6	RV-M RV-M RV-M RV-M RV-M
WL340800-000 WL340200-000 WL340300-000 WL340400-000 WL340500-000	WL3408XX-200 WL3402XX-200 WL3403XX-200 WL3404XX-200 WL3405XX-200	E04083W-50NT-00 E04023W-50NT-00 E04033W-50NT-00 E04043W-50NT-00 E04053W-50NT-00	RTL RTL RTL RTL RTL	TML-OR TML-OR TML-OR TML-OR TML-OR	FK6 FK6 FK6 FK6 FK6	RV-M RV-M RV-M RV-M RV-M
WL350800-000 WL350200-000 WL350300-000 WL350400-000 WL350500-000	WL3508XX-200 WL3502XX-200 WL3503XX-200 WL3504XX-200 WL3505XX-200	E05083W-50NT-00 E05023W-50NT-00 E05033W-50NT-00 E05043W-50NT-00 E05053W-50NT-00	RTL RTL RTL RTL RTL	TML-OR TML-OR TML-OR TML-OR TML-OR	FK6 FK6 FK6 FK6 FK6	RV-M RV-M RV-M RV-M RV-M

CHART 2

Heaters with Thermostats

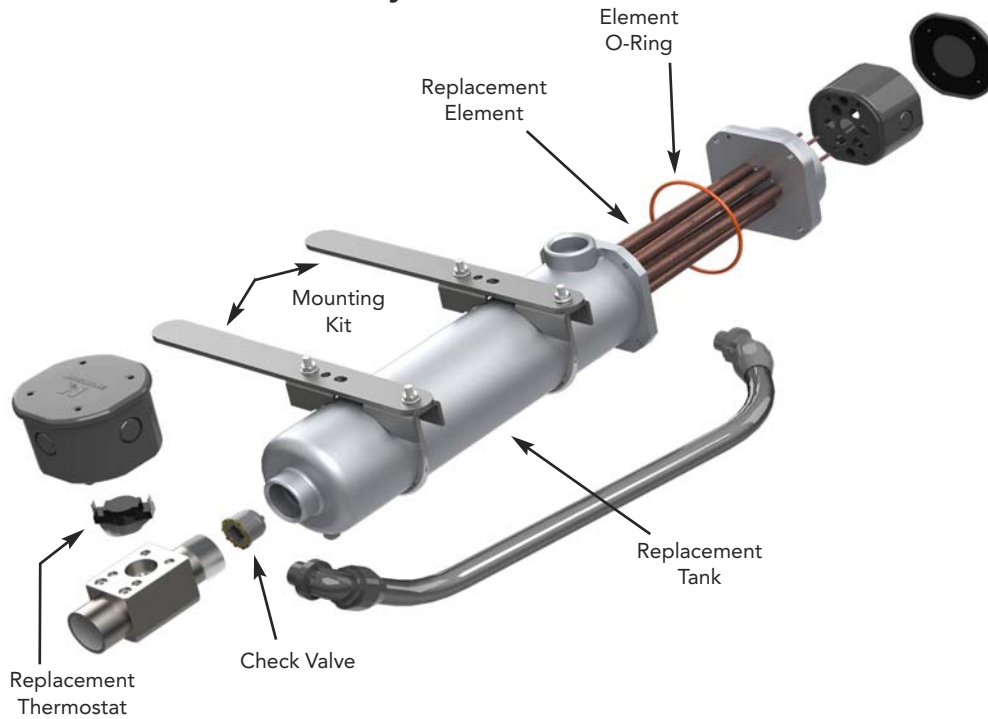
Temperature Range		Sensing Unit
ON	OFF	
80°F (27C)	100°F (38C)	FSU8
100°F (38C)	120°F (49C)	FSU10
120°F (49C)	140°F (60C)	FSU12
Adjustable 90° - 130°F (32°C - 54°C)		FSU90-130

Example:

Model Number: WL325210-200

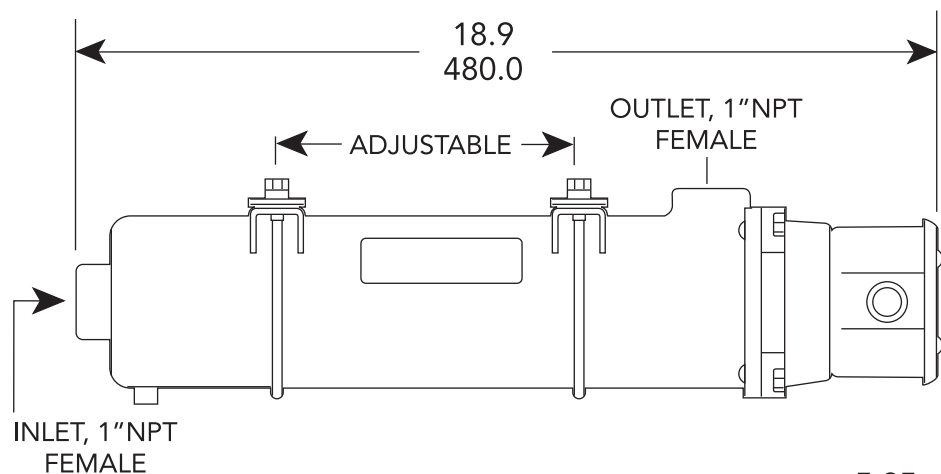
T-Stat Replacement: FSU10

WL Heater w/thermostat assembly

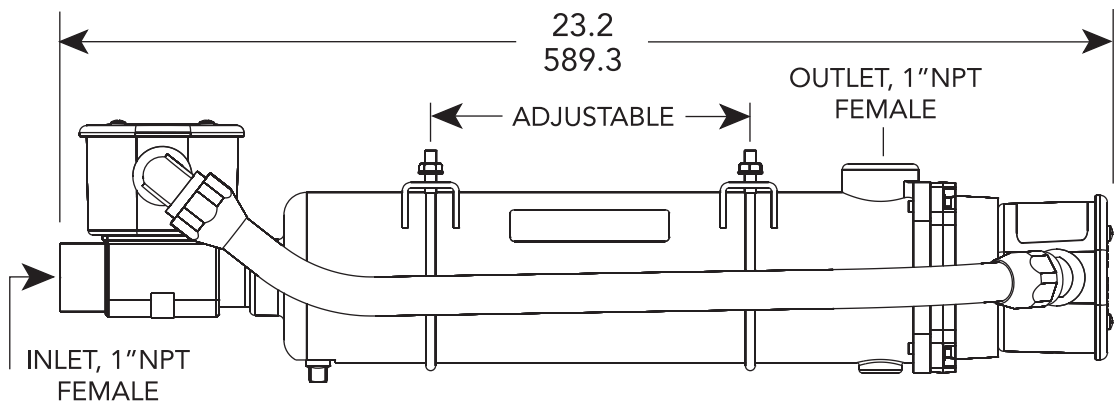
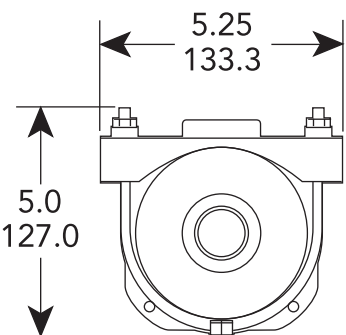


Dimensional Drawings

inch, millimeter



WL heater without thermostat



WL heater with thermostat

